

Reactor multipoint questionnaire

To determine radial temperature profiles

Model TC96-R (Flex-R®)

Customer data

Company	Date
Name	Phone
Department	Mobile
Address	Fax
	E-mail

Licensor

Licensor name

Application Refinery Petrochemical industry

Vessel data

Type of vessel Process unit

Name of vessel

Vessel dimensions Diameter Height

Vessel material

Vessel condition Used (in service) New

Temperatures Process Max. design temperature

Pressure Process Max. design pressure

Mounting Horizontal Vertical

Sensor data

Type of sensor Type of thermocouple Grounded Ungrounded

Thermocouple calibrated Yes No

Number of points *(see „Point location“ on page 2)*

MI cable material MI cable diameter

Secondary containment Yes No

Pressure monitoring Yes No

Process data

Process connection	Type	Nominal width	Material
	Rating	Schedule (rating of nozzle)	
	ID of nozzle	Unit of measure	

Non destructive testings

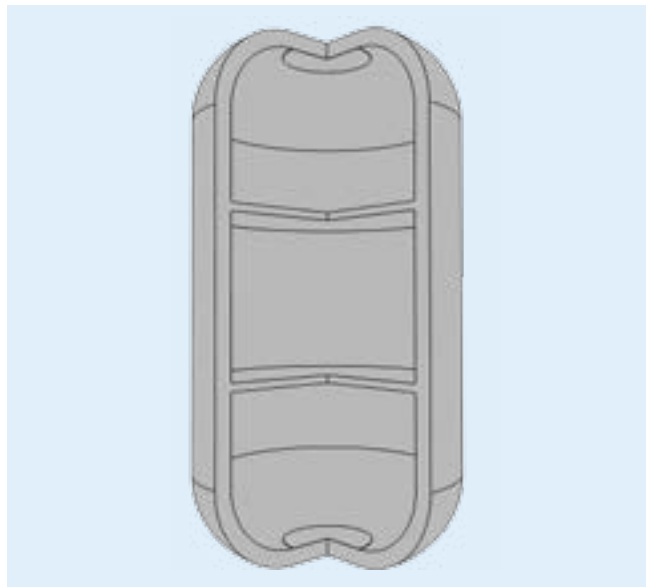
Pressure test wetted parts Yes No

On-site service

On-site service

Point location

Please draw the desired point location in the illustration on the right so that WIKA/Gayesco can take them into account when preparing the offer.



Additional notes

